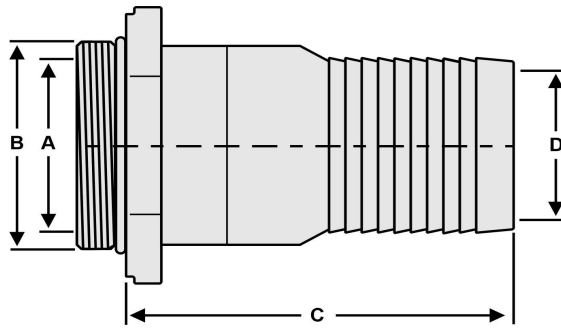


# SAE ST TO HB



## O-RING SEALED ADAPTER TO HOSE BARB

SAE Head to Barb						
Part Number	Port Size	Dimensions IN				Lbs
		A	B	C	D	
SAE						
20SAE-00-20HB	1 1/4"	1.25	1 5/8 – 12	3.08	1.05	0.7
20SAE-00-24HB	1 1/4"	1.25	1 5/8 – 12	3.13	1.29	0.8
24SAE-00-20HB	1 1/2"	1.50	1 7/8 – 12	3.30	1.05	0.8
24SAE-00-24HB	1 1/2"	1.50	1 7/8 – 12	3.30	1.29	0.8
24SAE-00-32HB	1 1/2"	1.50	1 7/8 – 12	4.66	1.75	1.3
32SAE-00-24HB	2"	2.00	2 1/2 – 12	3.90	1.29	1.4
32SAE-00-32HB	2"	2.00	2 1/2 – 12	3.90	1.75	1.4
32SAE-00-40HB	2"	2.00	2 1/2 – 12	5.55	2.25	2.3
32SAE-00-48HB	2"	2.00	2 1/2 – 12	5.55	2.66	3.3
40SAE-00-32HB	2 1/2"	2.50	3 – 12	4.13	1.75	2.2
40SAE-00-40HB	2 1/2"	2.50	3 – 12	4.35	2.25	2.3
40SAE-00-48HB	2 1/2"	2.50	3 – 12	5.18	2.66	2.8
48SAE-00-32HB	3"	3.00	3 1/2 – 12	4.92	1.75	2.9
48SAE-00-40HB	3"	3.00	3 1/2 – 12	4.62	2.25	2.9
48SAE-00-48HB	3"	3.00	3 1/2 – 12	4.87	2.66	3.1
48SAE-00-64HB	3"	3.00	3 1/2 – 12	6.59	3.63	4.9
64SAE-00-48HB	4"	4.00	4 1/2 – 12	5.47	2.66	4.4
64SAE-00-64HB	4"	4.00	4 1/2 – 12	5.81	3.63	5.1